



PRESS RELEASE

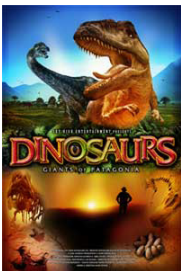
FOR IMMEDIATE RELEASE

Contact: Amy Biber
Marketing Manager
Buffalo Museum of Science
716.896.5200 x312
abiber@sciencebuff.org

SCIENCE MUSEUM OPENS NEW 3D CINEMA TO THE PUBLIC THIS SATURDAY, JUNE 26

Museum Members get first chance to see films at the *Robotic Dinosaurs*
Members' Preview this Friday Night

BUFFALO, NY (June 21, 2010) – The Buffalo Museum of Science will open the doors of its new digital 3D cinema to the public this Saturday, June 26. The films that will be featured are *Dinosaurs 3D: Giants of Patagonia* and *SOS Planet 3D*, both from Nwave. Each film will be played twice a day, seven days a week.



Dinosaurs 3D: Giants of Patagonia Shows daily at 11am and 1pm

Deeply rooted in science, this film carries the audience back in time to witness dinosaurs come to life. Meet the largest living animals to have ever walked the earth: the titanesque plant-eating Argentinosaur, and its nemesis, the Giganotosaur, a bipedal carnivore that could easily challenge the famous T-Rex!

Runtime: 20 minutes



S.O.S. Planet 3D Shows daily at 12pm and 2pm

SOS Planet highlights the cause-and-effect of global warming, ocean habitat depletion/ destruction and deforestation. This film reminds us that our planet is the shared home of many interconnected species and that by ensuring its health and diversity, we ensure our future.

Runtime: 12 minutes



Film Admission Prices (ages 2 and up):

Non- Members: \$3 per film or \$5 for a double feature plus museum admission

Museum Members: \$2 per film

Film tickets may be purchased at the museum admissions desk or the new movie concession area located outside of the cinema. Candy, popcorn and refreshments will also be available for purchase in the concession area.

On Friday, June 25, Museum Members are invited to an exclusive Members' Preview of both the 3D cinema and the museum's summer exhibit, *Robotic Dinosaurs*, from 4:30 to 7:30pm. Members are required to present their Member ID cards at the admissions desk. Admission to the museum and *Robotic Dinosaurs* is free for members and regular cinema

-MORE-

-3D Cinema, cont'd-

admission rates will be in effect.

The Buffalo Museum of Science is open Monday through Sunday, 10:00am to 4:00pm. General museum admission rates are:

\$8 adults

\$7 seniors 62+

\$6 children 2-17, students & military with ID

FREE for museum members and children under 2.

For more information on the museum, visit www.sciencebuff.org.

###

ABOUT ROBOTIC DINOSAURS

Robotic Dinosaurs are roaring back to Buffalo June 26 through October 10, 2010. These dinosaurs look and behave like REAL dinosaurs! See your favorite dinosaurs come to life, including Tyrannosaurus Rex, Triceratops, Stegosaurus and more! Visitors young and old will feel like true paleontologists as they sift through a dino dig box and operate a robotic dinosaur skeleton. *Robotic Dinosaurs* is included with general museum admission and **FREE** for Museum Members.

ABOUT THE BUFFALO MUSEUM OF SCIENCE

The Buffalo Museum of Science is the non-profit educational institution dedicated to the study and interpretation of the natural and physical sciences. Its extensive collections of over 700,000 specimens and artifacts represent all facets of the natural world with an emphasis on Western New York as well as man-made objects spanning the globe. Based at 1020 Humboldt Parkway and anchoring Buffalo's East Side in Olmsted-designed Martin Luther King, Jr. Park since 1929, the Museum presents a wide variety of programs and services for children, teachers, families, adults, and community organizations throughout each year. The Museum also operates Tiffit Nature Preserve in South Buffalo, a 264-acre urban wetland preserve on reclaimed former industrial land and seasonally sponsors archaeological exploration at the Hiscock Site in nearby Genesee County, NY, one of North America's richest Ice Age sites.

For further information on the Museum and its upcoming activities, call 716-896-5200 or visit www.sciencebuff.org.