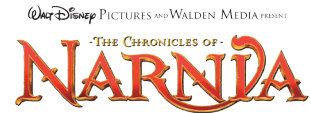




PRESS RELEASE

SAVE ON ADMISSION TO *THE CHRONICLES OF NARNIA: THE EXHIBITION* Buffalo Museum of Science to waive \$2 special exhibit admission fee on Tuesdays, Wednesdays and Thursdays in April

Buffalo, NY (April 4, 2011) – The Buffalo Museum of Science has announced that it will waive the additional \$2 admission fee to visit *The Chronicles of Narnia: The Exhibition* on Tuesdays, Wednesdays and Thursdays in April.



Admission to the special traveling exhibit is normally an additional \$2 with Museum Membership or paid general museum admission (\$8 adults 18-61, \$7 seniors 62+, \$6 children 2-17). The April Special will waive the \$2 fee so that the exhibition will be included with general museum admission and free for Museum Members on Tuesdays, Wednesdays and Thursdays, only.

Since its opening on January 24, 2011, *The Chronicles of Narnia: The Exhibition* has received positive feedback from guests. The museum is offering this April special to encourage guests and Museum Members to experience the exhibit again before it closes on May 8, 2011.

The museum expects a large turnout during the local school spring break later in the month. Due to capacity restrictions, entry to the exhibition is timed on the hour and the museum is warning guests that time slots may sell out.

“We nearly sold out of many of our time slots during the school break in February and we expect even larger crowds during the April recess,” commented Mark Mortenson, president & CEO of the Buffalo Museum of Science. Mortenson added that if a time slot does sell out, guests are offered tickets for the next available time slot and may enjoy the museum’s permanent galleries while they wait to enter the exhibition.

The additional \$2 fee will still be required to visit the exhibition on Fridays, Saturdays, Sundays, and Mondays in April.

Museum hours are 10am to 4pm every day with extended hours on Fridays until 7pm.

For more information on *The Chronicles of Narnia: The Exhibition* or the museum, visit www.sciencebuff.org.

ABOUT *THE CHRONICLES OF NARNIA: THE EXHIBITION*

Sponsored by M&T Bank

Discover the science and the wonder illuminated in the blockbuster Disney film series and the timeless works of author C.S. Lewis. With hands-on, interactive elements and original film artifacts, guests encounter topics like geography, archeology, engineering, humanity’s impact on nature and environmental changes. The Exhibition inspires visitors to learn more about the science behind *The Chronicles of Narnia*.

###

Contact: Amy Biber
Marketing Manager
Buffalo Museum of Science
(716) 896-5200 x312
abiber@sciencebuff.org