

FIND WHY.



Buffalo Museum of Science & Tifft Nature Preserve

JANUARY & FEBRUARY 2024

SCIENCE afterHOURS GET A CLUE Challenge Edition

JANUARY 26 | 6 - 9 P.M.

TICKETS: \$35*

Help solve a Museum Mystery! Was it botanist Mary Gold in Rethink Extinct with the mastodon tusk? With your team, gather clues from witnesses stationed throughout the Museum to determine "whodunit."

Ages 21+ | Cash Bar - Photo ID required

Tickets at sciencebuff.org

SCIENCE afterHOURS eclipse

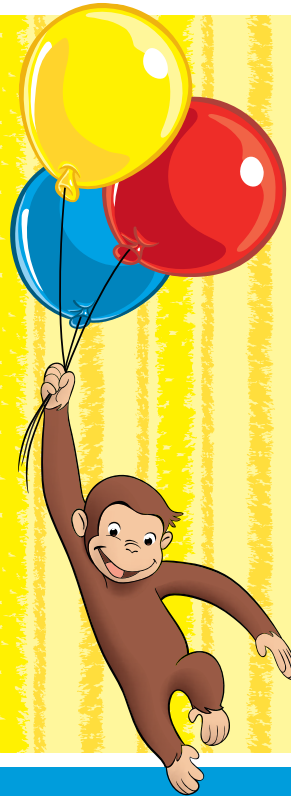
MARCH 1 | 6 - 9 P.M.

TICKETS: \$25*

Grab a drink and get ready for the total solar eclipse on April 8! Join this adults-only night of celestial-themed activities and demonstrations with Museum staff and partners exploring all things eclipse. Pick up your free pair of eclipse viewing glasses and try a limited edition eclipse-themed beer launched by Big Ditch Brewing.

Ages 21+ | Photo ID required

Tickets at sciencebuff.org



Curious George Let's Get Curious!



January 20 - May 12, 2024

Open daily! The exhibit will be open until 9 p.m. on Wednesdays!
Included with museum admission and FREE for members! | All Ages

The insatiable curiosity of Curious George comes to life with a traveling exhibit at the Buffalo Museum of Science. Curious George: Let's Get Curious! will introduce guests to Curious George's world and lead visitors on a fun, meaningful adventure with math, science and engineering-based interactives.

Visit our [website event calendar](https://sciencebuff.org) for information on special story times and member Monday hours!

Curious George television series merchandise © Universal Studios Curious George and related characters created by Margret and HA. Reprinted and trademarked by Houghton Mifflin Harcourt Publishing Company and used under license by Universal Studios Licensing LLLP. All rights reserved.

GET READY FOR THE APRIL 8 ECLIPSE!

On April 8, 2024, Western New York will experience a total solar eclipse! On that day, the Sun and Moon will align over WNY, encompassing everyone in our region in what is called the Path of Totality.

Visit sciencebuff.org/eclipse to learn how you get your free eclipse viewing glasses and important eclipse safety information.



The Buffalo Museum of Science & Tifft
Nature Preserve will be closed on April 8.

eclipse

National Engineers Week

FEBRUARY 18 - 24 | ACTIVITIES OFFERED 11 A.M. - 2 P.M.

National Engineers Week is back! We are celebrating the 2024 theme "Welcome to the Future" with a week of on-site activities to connect and inspire.

Discover careers and technologies supporting space exploration and renewable energy solutions. Each day promises new activities and special guests. Don't miss UB Engineering Day on February 18 and National Introduce a Girl to Engineering Day on February 23. Additional themes and guests all week.

Activities included with Museum Admission | All Ages

BUFFALO MUSEUM OF SCIENCE

FOR ADULTS

SciNIGHT

**ADULT WORKSHOPS | ADULTS 18+
\$30 PER PARTICIPANT***

SCI-NIGHT WORKSHOP: GYOTAKU FISH PRINTING

January 17, 6- 7:30 p.m.

Explore the art of gyotaku, fish printing, in our hands-on workshop that links creativity and natural beauty. Learn about the history and techniques of this art form and create your own lifelike prints to take home. You'll be o-fish-ally hooked! All materials are provided and no prior experience is required.

SCI-NIGHT WORKSHOP: LONELY HEARTS DISSECTION

February 14, 6- 7:30 p.m.

Have your heart set on something fun and unique to do? Find out if hearts truly have heartstrings, explore chambers, sizes and history while taking a knife to the heart (not yours!) while beating the February blues in this dissection workshop.

BEHIND-THE-SCENES COLLECTIONS TOURS | ADULTS 18+ \$30 PER PARTICIPANT*

Did you know the Museum houses more than 700,000 specimens and artifacts? Get behind the scenes to see what few have seen and explore the Museum's Collection. Tours are approximately 90 minutes in length. Adults 18+ only. Register online or by phone at least one week in advance.

GEOLOGY ROCKS!

January 10 & February 7, 6- 7:30 p.m.

Holmes! What kind of rock is this? Sedimentary, my dear Watson. Learn why this and other corny Y jokes are funny by investigating the Museum's Geology Collection. Come behind the scenes and see the rock cycle, marvel at our minerals and discover our large fossil collection.

CABINET OF CURIOSITIES

January 24 & February 21, 6 - 7:30 p.m.

Take a peek into the Vertebrate Zoology Collection's spine-tingling Cabinet of Curiosities to explore the mind-bending stories of some of nature's unique freaks, morbid mistakes, and seemingly scientific impossibilities! Marvel at obscure oddities, glimpse the wildly unusual, and satisfy your macabre interests. Feeling enticed yet? We invite (dare) you to join us for a hair-raising tour to get an eyeful of all this, and more.

DISCOVERY CAMPS

AGE GROUPS: 5-6 & 7-10 (16 PER GROUP)

\$310* PER CAMPER | Register today at sciencebuff.org

Early drop off begins at 8:30 a.m. Late pick-up available until 5:30 p.m.

CREATE, INNOVATE AND DISCOVER!

FEBRUARY 19 - 23, 9 a.m. - 4 p.m.

Create, innovate and discover! Let's solve problems, complete challenges and be creative through hands-on STEM explorations during our break week Discovery Camp!

SAVE THE DATE! SPRING BREAK WEEK TOTALLY ECLIPSE DISCOVERY CAMP! | APRIL 1 - 5, 9 a.m. - 4 p.m.



Extended Hours every Wednesday until 9 p.m.

Through May 2024, explore all four floors of the Museum EVERY Wednesday night until 9 p.m.

Check out our new Connect gallery on the 2nd floor!

Included with admission and free for members.

FAMILY AND PUBLIC PROGRAMS

SOLAR ECLIPSE SAFETY TRAINING | December 27, January 15, February 23 | 1 p.m. | Recommended for ages 12+

The April 8, 2024 Total Solar Eclipse is coming in a few short months! A total solar eclipse is an extremely rare and special event. Our communities will need as many trained volunteers as possible when the eclipse arrives. This hands-on workshop will teach you how to view the eclipse without the danger of damaging the eyes or affecting vision. We will discuss how the eclipse will unfold in detail so that you can guide others as to what to expect and how to prepare. A variety of safe eclipse viewing methods will be explained and demonstrated. Seats will be available until capacity is reached. Included with museum admission and free for members.

PLANETARIUM SHOWS | \$15 per participant*

December 27 - 28, 10:30 a.m. | All ages

January 27, February 10 & 24, 11 a.m. & 1 p.m. | Ages 5 and up

Join us on a tour of the skies over the Queen City and beyond. From solar and lunar eclipses to the vast expanse of space, this program gives people of all ages the chance to ask questions and guide the program for a unique experience each time. Please call x394 for Accessibility information.

COMMUNITY DAY - MLK, JR. PAY AS YOU WISH DAY

January 15, 10 a.m. - 4 p.m. | All ages

Celebrate Martin Luther King, Jr. Day with joyful exploration of science! Pay the admission you wish all day long from 10 a.m. to 4 p.m. All admission contributions, big or small, will support our mission.

COLLECTIONS LIVE! | ALL AGES

Included with Museum admission and free for members.

PROCESSING HISTORIC IMAGES AT THE BUFFALO MUSEUM OF SCIENCE | Mondays, 12:30 - 3:30 p.m.

Have an interest in historic images? "Hidden Views: Salvaging Historic Images at the Buffalo Museum of Science" is a project that aims to digitize almost 2,000 historical images relating to the Buffalo Society of Natural Sciences, transforming them into available resources. Get a glimpse of some of these images and learn about the process that will make them available to all. No pre-registration required, activity is ongoing. *This project is funded by the National Endowment for the Humanities.*

WORKING WITH THE GEOLOGY COLLECTION

Mondays, 10 - 1 p.m.

A lot goes on behind the scenes in our Collections Department. Unearth some of the projects our staff and volunteers are currently working on in Geology Storage. No pre-registration required, activity is ongoing.

MUSSEL MEMORY | Wednesdays, 1 - 4 p.m.

Take a moment to wade into our Digital Imaging Lab to reveal how digitization has brought our Freshwater Mussel Collection out of memories past and into the forefront of current research. No pre-registration required, activity is ongoing.

TIFFT NATURE PRESERVE

FOR ADULTS

TIFFT VOLUNTEER TOUR GUIDE TRAINING | January 29 & 31, 9:30 a.m. - 12:30 p.m. | Ages 18+ | FREE*

Do you enjoy being outdoors and sharing the wonders of nature with groups of children? Then Tift wants you as a Volunteer Tour Guide! Register for our two-part Winter Training Series to learn why and how we do what we do to reach thousands of children each year. *Please pre-register BEFORE January 22.*

STARRY NIGHT VALENTINE HIKE | February 10, 7 - 8:30 p.m. Ages 18+ | \$10 per person*

Grab your favorite someone and enjoy the crisp night air while we stroll through Tift's trails and end with a hot cocoa bar and make-your-own Valentine's Day cards in Tift's cozy Education Center. (Snowshoe rentals are additional \$2 per person, weather permitting)

IT ONLY TAKES A FEW BUCKS: HOW DEER ARE RESHAPING OUR NATURAL HABITAT

February 29, 6 - 7:30 p.m. | Ages 18+ | FREE*

White-tailed deer are important and influential native wildlife to our region. Join us for an indoor presentation on deer population impact upon our native plant and animal species with time for a group discussion.

SciNIGHT

ADULT WORKSHOPS | ADULTS 18+ \$20 PER PERSON*

Sign up monthly for a special evening of ADULT-ONLY fun, food, and science! Meet local nature enthusiasts, share your interest, and learn something new! Delicious refreshments provided.

INDOOR ECLIPSE EXPERIENCE & NIGHT HIKE

January 19, 7 - 9 p.m.

Experience a solar and lunar eclipse and a tour of the Queen City skies inside our portable indoor planetarium plus a short guided hike under the real night sky. This is the perfect opportunity to ask your eclipse questions and get ready for the shadow of the Moon on April 8! Contact x394 for planetarium accessibility information.

SECRET CODES & CRYPTOGRAPHY | February 8, 7 - 8:30 p.m.

Work alone or with a partner to decrypt secret codes, solve nature-themed challenges and puzzles throughout the building, and create a reusable cipher and secret message of your own! During this indoor program we'll cover the art and science of encrypting messages, different types of ciphers, and engage in some interactive hands-on coding fun!

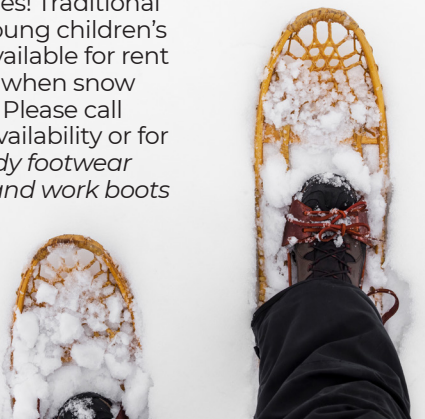
Seasonal Offering

SNOWSHOE RENTALS

Snowshoeing for ALL ages! Traditional wood snowshoes and young children's plastic snowshoes are available for rent in the Education Center when snow is at least 6 inches deep. Please call 716.825.6397 to ensure availability or for more information. **Sturdy footwear recommended (hiking and work boots are best).*

Children under 75lbs \$5 per pair

Children 75+ lbs and Adults, \$5 per pair



FOR KIDS

GIRL SCOUTS: SENIOR SOW WHAT? JOURNEY

January 13, 1 - 4 p.m. | \$15 per Scout

Get down to the roots of our food "network" to explore the relationships between what we eat, and the land, water, air, and energy use around us. Advance registration required.

SCOUTS BSA: MAMMAL MERIT BADGE

January 27, 1 - 4 p.m. | \$15 per Scout

Examine WNY mammal pelts and skulls, discuss real world mammal population issues and search for mammal evidence within the Preserve. See tift.org for required pre-requisites. Advance registration required.

EXPERIMENT NIGHT! FAMILY NIGHT OUT!

January 27, 6 - 8 p.m. | Ages 5+ | \$10 per child with adult*

Join us for an indoor family night out conducting simple, sometimes messy, always fun science experiments and hands-on activities for young scientists, from frozen bubbles to "elephant toothpaste" and fake snow!

WARM-UP TO WINTER CAMP

FEBRUARY 19 - 23, 9 a.m. - 4 p.m.

Ages 6-8 | \$310 per child*

Stay cozy in the cabin while investigating all things winter with science experiments, crafts, games, and daily outdoor exploration. Snacks provided. Please bring lunch in a reusable container.

Late pick-up arrangements must be reserved at time of pre-registration: 4:30-5:30PM at \$12 per half hour, per day.



FOR KIDS & ADULTS

NEW YEAR HIKE | January 6, 10 a.m. - 11:30 p.m. | All ages | \$8 per person*

Welcome the New Year with a refreshing guided hike on trails less traveled! We'll keep a steady pace but pause here and there to enjoy the beauty of nature and reflect upon hopes for the months to come.

INDOOR ECLIPSE EXPERIENCE | January 20, Select a 45 min. session: 11a.m., 12p.m., 3p.m. | Ages 5+ | \$15 per person*

Experience a solar and lunar eclipse and a tour of Queen City skies inside our portable indoor planetarium! This is the perfect opportunity to ask your eclipse questions and get ready for the shadow of the Moon on April 8!

FULL MOON FAMILY HIKE | January 25, 6 - 7:30 p.m. | Ages 5+ | \$8 per person*

Enjoy an evening outdoors with a guided, tranquil stroll in search of wildlife beneath January's Full Moon. Flat accessible trails. No headlamps, video, or photography please.

WINTER BIRDING FOR FAMILIES | February 18, 2 - 4 p.m. | All ages | FREE*

Join us for indoor family-friendly winter birding activities and fun! This program is just one of MANY offerings by guest speakers and partnering organizations during the region-wide annual Birds on the Niagara: An International Winter Birding Festival! Visit www.birdniagara.org for more information!

WELLNESS WALKS | Every Thursday, 10 a.m. - 12 p.m. | All ages | FREE* | \$3 donation per person is appreciated

Drop by Tift Nature Preserve every Thursday and join us for a casual volunteer-led tour of the Preserve. Please call 716-825-6397 to confirm walk will take place. *Presented by Independent Health.*

**BMS Members receive 10% off. Advance registration required.*

SAVE THE DATE

SPRING EGG stravaganza

Friday, March 29

10 a.m. - 4 p.m. | All ages | Tickets: \$10

Join in the EGG-streme fun and EGG-citement at our annual indoor celebration of animals that hatch from eggs! Meet live animals with Messinger Woods Wildlife Care, enjoy make 'n' take crafts, games, guided hikes and hands-on activities. Plus, dye eggs using handmade, natural dyes from flowers and vegetables! Bring your own hard-boiled eggs; maximum of 6. **Space is limited. BMS Members save 10%. Tickets go on sale in January. Visit [TIFFT.org](https://www.tifft.org) for more information**

Celebrate

**BLACK
HISTORY
MONTH**

Special display presented by



February 1 - 29,
10 a.m. - 4 p.m. | All ages

Join us in celebrating some
of the many scientific
contributions of
African Americans.

*Free with Museum
admission.*

SAVE THE DATE

Summer 2024

**DISCOVERY
CAMPS**

Early bird registration opens February 15



**FIND
WHY.**



Valuing Nature's Wisdom



The programs of the Buffalo Society of Natural Sciences are supported in part by public funds from the County of Erie; City of Buffalo; New York State Office of Parks, Recreation and Historic Preservation; and our members and friends.

Buffalo Museum of Science

1020 Humboldt Pkwy | Buffalo, NY 14211
sciencebuff.org

PHONE 716.896.5200
TOLL FREE 866.291.6660

Museum Hours

Monday - Sunday 10 a.m. - 4 p.m.
Extended Wednesday Hours *through May* 10 a.m. - 9 p.m.

Admission

Adults (18-61).....	\$19
Children (2-17).....	\$16
Seniors (62+).....	\$16
Student/Military (ID REQUIRED).....	\$16
Members.....	FREE
Children Under 2.....	FREE

AAA Members, Buffalo & Erie County Public Library Cardholders, and NFTA pass cardholders can receive discounted admission. Cannot be combined with other offers. Exclusions may apply due to contractual agreements with certain exhibits.

Tifft Nature Preserve

1200 Fuhrmann Blvd
Buffalo, NY 14203
tifft.org

PHONE 716.825.6397

Education Center Hours

Wednesday - Sunday 10 a.m. - 4 p.m.

Also available Monday and Tuesday for group reservations and private rentals.

Trail Hours

Open daily from dawn until dusk

Access to Tifft's grounds, boardwalks and trails is
FREE AND OPEN TO THE PUBLIC

Donations are gratefully accepted.
Reservations are required for groups of 10+.

FOLLOW US...



@BuffaloMuseumofScience
@TifftNaturePreserve



@BuffaloScience
@TifftNature



@BuffaloScience
@TifftNature



@bflomuseumofscience