

# Summer 2025

# DISCOVERY CAMPS Welcome Guide



**Thank you for registering your camper for  
Discovery Camp at the Buffalo Museum of Science!**

*Please carefully review the information listed before camp.*

## Camp Grade Levels:

- Preschool (Ages 3–4)
- Children entering Kindergarten and Grade 1 in Fall 2025
- Children entering Grades 2 and 3 in Fall 2025
- Children entering Grades 4 and 5 in Fall 2025

*All campers must have independent bathroom skills (no Pull-ups).*

## Daily Schedule:

### **8:30–9 A.M. DROP-OFF and 4–4:30 P.M. PICK-UP**

*We maintain flexibility at all times while following the schedule below:*

- 9:00 a.m.** Camper Check-In / Free Play in SensERIE
- 9:30 a.m.** Museum Visit #1, Activities & Morning Snack
- 12:00 p.m.** Lunch & Free-Time / Recess Outside  
(weather permitting)
- 1:00 p.m.** Crafts, Games, & Activities
- 2:30 p.m.** Snack & Quiet-Time
- 3:00 p.m.** Crafts, Games, & Activities & Museum Visit #2
- 4:00 p.m.** Camper Check-Out and Pick-Up

**LATE PICK-UP: 4:30–5:30 P.M.** (\$12 per 30 minutes per day;  
*must be arranged at time of registration*)

**Please ensure your camper eats breakfast before  
arriving to Camp.**



## Before Camp:

- In the weeks before camp starts, look for an email from CampDoc on how to electronically submit your camper's Health Profile, Emergency Contacts, Permission for Pick-up Information, Character Pledge, and Immunization Records. Please submit all information no later than 2 weeks prior to the first day of Camp.
  - **Campers will not be permitted at Camp until fully completed CampDoc forms and immunization records are received.**
  - If you have submitted forms to Tifft, there is no need to submit the forms again to BMS.
  - **If you have submitted information for camp in a previous year using CampDoc, your login will remain the same and you will be asked to update your camper's records or resubmit certain fields in preparation for the current year.**
- Before camp begins, please communicate any special circumstances or camper needs/supports that BMS staff should be aware of to make sure your camper has a great week! Email [bmscamps@sciencebuff.org](mailto:bmscamps@sciencebuff.org) or call (716) 896-5200 x317.
- If you did not register for late pick-up and your camper will need to be at the BMS later than 4:30 p.m. on any day, please contact us as soon as possible—[bmscamps@sciencebuff.org](mailto:bmscamps@sciencebuff.org) or call (716) 896-5200.
- To ensure all are able to enjoy their camp experience, please remind your camper to adhere to camp behavioral expectations outlined in the Character Pledge on a daily basis. These include respecting all campers, camp staff, camp facilities, following directions, and keeping hands and feet to oneself. Violations of camp expectations may result in permanent removal from Camp.

## What to Wear and Bring:

**For their safety and comfort, all campers should wear:**

- Clothes that can get messy
- Layers appropriate for the day's weather. It can be chilly in the Museum, and if the weather permits, we go outside for recess. Dressing/bringing layers helps campers to adjust to these changes and remain comfortable.
- Closed-toe shoes with socks, no sandals, flipflops, or foam clogs

**Items campers need to bring each day:**

- Change of clothes including socks and underwear. (Messses and spills can happen even with older campers. If an accident happens, we want to ensure that your child can feel comfortable for the remainder of the day!)
- Sweatshirt or light jacket
- Lunch, labeled with your camper's name (No refrigeration or microwaving is provided)
- Filled water bottle, labeled with your camper's name

## What to Wear and Bring, Continued:

- A small morning and afternoon snack will be provided, but feel free to pack your own.
- Cubbies will be provided for each camper's items.
- Besides lunch boxes, all items above may stay at the BMS throughout the week and go home with campers on Fridays. We do recommend that your camper's items are labeled.
- Please leave all personal items (toys, electronics, stuffed animals, etc.) at home so that they do not get lost or damaged. The BMS is not responsible for any lost or damaged items brought from home. Use of cell phones and other electronics is prohibited during the camp program. If you need to reach your camper, please call Museum at 716-896-2500.
- Apply a layer of sunscreen at home or at the Museum prior to signing in your camper. As per the Department of Health, staff is not permitted to apply sunscreen to children. We do plan to go outside daily, weather permitting.
- If your camper has prescription medication they take during the day or for emergencies per CampDoc information, please hand the clearly labeled medicine to Camp staff in the morning so it can be secured.



## To Drop Off Your Camper:

- Drop-off begins no earlier than 8:30 a.m. in the Museum Atrium and ends at 9:15 a.m.
- Upon arrival to the BMS, please park in the parking lot near the Museum's Main Entrance. During morning drop-off, please do not pull-up or park along the parking lot road. Staff will greet you and your camper inside the front doors of the Museum at the Camp Kiosk in the Museum Atrium.
- Staff greeting you and completing the check-in process will direct your camper inside the SenseERIE exhibit for free play where they will be greeted by another staff member who will assist them in getting to the correct classroom.
- Families arriving after 9:15 a.m. should ring the doorbell (before 10 a.m.) and check in with Museum staff at the Admissions desk.
- Once campers are dropped off, please refrain from entering the Museum areas. If you do wish to visit the Museum later in the day, the doors will open at 10 a.m.

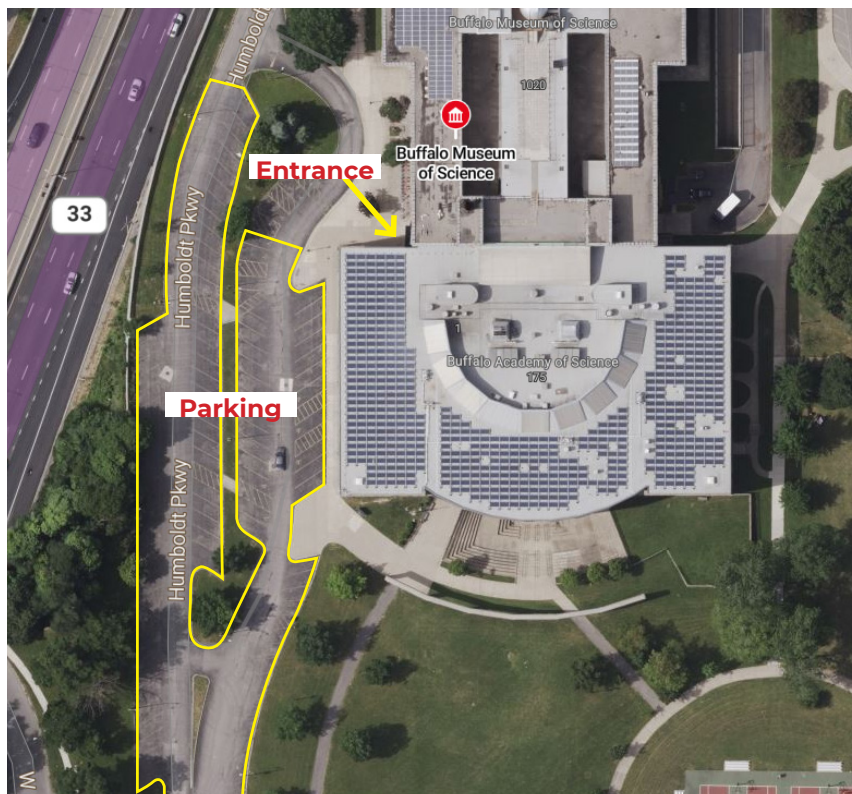


# SUMMER 2025 DISCOVERY CAMP WELCOME GUIDE



## Buffalo Museum of Science

1020 Humboldt Parkway  
Buffalo, NY 14211-1208



## To Pick Up Your Camper:

- Please enter through the Museum's Main Entrance. A staff member will be stationed at the Camp kiosk in the Museum Atrium. Be ready with a form of photo identification to present to staff.
  - Campers will not be released to anyone that cannot present photo identification or whose name is not on the pick-up list on their Health and Emergency CampDoc Form. This includes parents.
- Once staff has confirmed your name on the camper's pick-up list, they will radio the camp staff.
- Counselors will alert the camper that they are getting picked up and staff will escort campers to the Camp kiosk.
- If a camper will be picked up before 3:45 p.m., please tell staff ahead of time at drop-off so we can prepare them for early pick-up. Upon arrival, call the Museum at 716-896-5200.
- Once campers are picked up, please refrain from entering the Museum areas.

**Questions? Contact BMS at [bmscamps@sciencebuff.org](mailto:bmscamps@sciencebuff.org) or call (716) 896-5200 x317**